



PSD

CODE DESCRIPTION - PLASTERBOARD INSTALLATION		
PLM DIFFUSER + ATTACK POSITION:	PSDLXH*	E.g. PSD600X50P
PLM DIFFUSER CONNECTION POSITION + NO. AND DIAMETER:	PSDLXH*-Ø	E.g. PSD600X50P-D200 <small>(1 attachment a200)</small>

CODE DESCRIPTION - WALL / BOARD INSTALLATION		
PLM DIFFUSER + ATTACK POSITION:	PSDMLXH*	E.g. PSDM600X50P
PLM DIFFUSER CONNECTION POSITION + NO. AND DIAMETER:	PSDMLXH*-Ø	E.g. PSDM600X50P-D200 <small>(1 attachment a200)</small>

* Attack position (P-posterior, S-superior)
L-lateral: indicate right or left side when ordering (front view)
MAX. DIAMETER SLEEVE Ø 150

DESCRIPTION

The PSD are plenum diffusers complete with a retractable diffuser without a frame. Made with a rigid polyurethane foam panel with a density of 49 (+/-2) kg/m³.

INSTALLATION

Wall and ceiling mounted, can be installed on masonry and plasterboard.

ON DEMAND

Non-standard dimensions.

DELIVERY version - DELIVERY for VMC.

CHARACTERISTICS

- Material: rigid polyurethane foam panel and aluminum foil, black colour.
- Exposed grille finish: painted white RAL9016.
- Adjustable aluminum fins painted RAL9016.
- **Side caps molded in white ABS, self-extinguishing.**



USE

Heating and air conditioning.

→				
LENGTH (mm)	REAR ATTACHMENT	SIDE ATTACK	TOP ATTACK	SD FLAP REPLACEMENT KIT
200		€115.50		€22.20
300		€123.60		€23.70
400		€130.20		€25.00
500		€145.90		€28.00
600		€155.60		€28.00
800		€201.20		€29.90
1000		€235.80		€38.60
1200		€280.60		€45.30
1500		€290.40		€53.90
2000		€325.50		€55.80
3000		€673.40		€129.50
3500		€725.40		€139.50
4000		€781.00		€150.10
4500		€905.80		€174.10
5000		€1,063.90		€204.50
6000		€1,346.70		€258.90

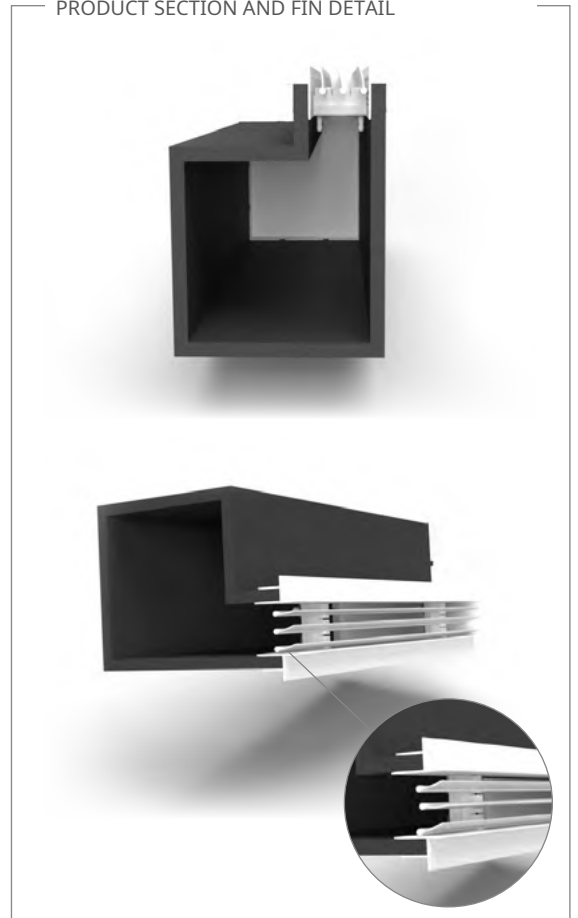
technical data

LxH :dimensions
 Ak:free area - free area refers to the diffuser with 0° deflection blades L :launch (in isothermal conditions)
 Q:air flow speed 2 m/s (min.) - speed 3.5 m/s (max.)

All dimensions are expressed in mm.

LxH (mm)	Ak (m ²)	Throw (m)		Q (m ³ /h)	
		min.	max.	min.	max.
200x50	0.0069	2.0	3,4	50	87
300x50	0.0103	2.1	3.7	74	130
400x50	0.0138	2,3	4.0	99	173
500x50	0.0172	2.4	4.1	124	217
600x50	0.0206	2.5	4.3	149	260
800x50	0.0275	2.6	4.5	198	347
1000x50	0.0344	2.7	4.8	248	433
1500x50	0.0516	2.9	5.2	372	650
2000x50	0.0688	3.1	5.5	495	867

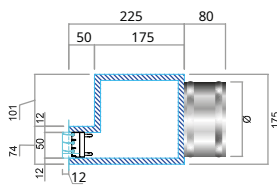
PRODUCT SECTION AND FIN DETAIL



dimensions

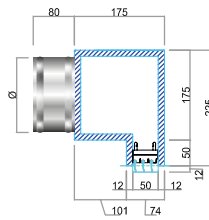
PSDheight 50 mm - PLASTERBOARD INSTALLATION

Detail PSD height 50 mm with P connection



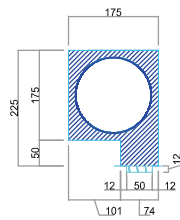
NB= For connection up to ø250 mm (ø200 and ø250 ovalised)

Detail PSD height 50 mm with S attachment



NB= For connection up to ø250 mm (ø200 and ø250 ovalised)

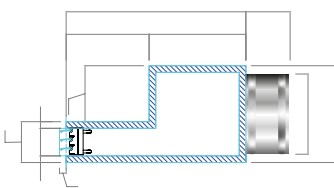
Detail PSD height 50 mm with L connection



NB= For connection up to ø150 mm

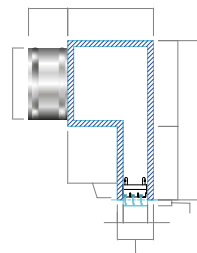
PSDMheight 50 mm - WALL / BOARD INSTALLATION

Detail PSDM height 50 mm with P connection



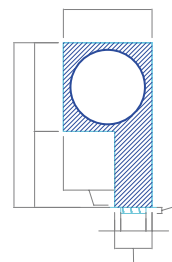
NB= For connection up to ø250 mm (ø200 and ø250 ovalised)

Detail PSDM height 50 mm with S connection



NB= For connection up to ø250 mm (ø200 and ø250 ovalised)

Detail PSDM height 50 mm with L connection



NB= For connection up to ø150 mm