



PSF - SINGLE SLOT

CODE DESCRIPTION - PLASTERBOARD INSTALLATION		
SINGLE SLOT PLENUM GENERIC:	PSFLXH*	Es. PSF800X30P
SINGLE SLOT PLENUM WITH CONNECTION DIAMETER:	PSFLXH*-Ø	Es. PSF800X30P-D200 (1 att. ø200)

CODE DESCRIPTION - WALL / BOARD INSTALLATION		
SINGLE SLOT PLENUM GENERIC:	PSFMLXH*	Es. PSFM800X30P
SINGLE SLOT PLENUM WITH CONNECTION DIAMETER:	PSFMLXH*-Ø	Es. PSFM800X30P-D200 (1 att. ø200)

Attack position (P-posterior, S-superior)
L-lateral: indicate right or left side when ordering (front view)
MAX. DIAMETER SLEEVE Ø 150

DESCRIPTION

The PSF are plenums complete with a diffuser with retractable slots, without a frame.
 Made with a rigid polyurethane foam panel with a density of 49 (+/-2) kg/m³.

INSTALLATION

Wall and ceiling mounted, can be installed on masonry and plasterboard.

ON DEMAND

Non-standard dimensions.
 DELIVERY version - DELIVERY for VMC.

CHARACTERISTICS

- Material: rigid polyurethane foam panel and aluminum foil, black colour.
- With built-in deflector fins.
- **Side caps molded in white ABS, self-extinguishing.**



USE

Heating, air conditioning and mechanical ventilation.

LENGTH (mm)	1 SLOT		
	REAR ATTACHMENT	SIDE ATTACK	TOP ATTACK
200		115,70 €	
300		123,80 €	
400		130,50 €	
500		146,20 €	
600		155,90 €	
800		167,60 €	
1000		196,50 €	
1200		233,80 €	
1500		249,50 €	
2000	271,20 €	-	271,20 €
2500	384,60 €	-	384,60 €
3000	561,20 €	-	561,20 €
3500	650,80 €	-	650,80 €
4000	650,80 €	-	650,80 €
4500	756,10 €	-	756,10 €
5000	886,50 €	-	886,50 €
6000	1.122,30 €	-	1.122,30 €

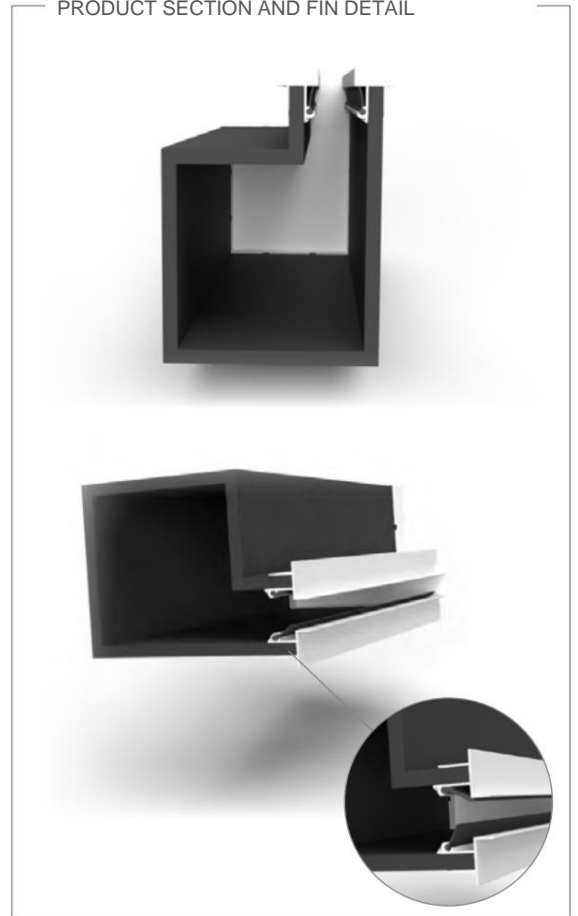
technical data

LxH : dimensions
 Ak: free area
 L : launch (in isothermal conditions)
 Q: air flow speed 2 m/s (min.) - speed 3.5 m/s (max.)

All dimensions are expressed in mm.

LxH (mm)	And (m ²)	Throw (m)		Q (m ³ /h)	
		min.	max.	min.	max.
200x30	0,0060	1,9	3,4	43	76
300x30	0,0090	2,1	3,6	65	113
400x30	0,0120	2,2	3,9	86	151
500x30	0,0150	2,3	4,0	108	189
600x30	0,0180	2,4	4,2	130	227
800x30	0,0240	2,5	4,4	173	302
1000x30	0,0300	2,6	4,6	216	378
1500x30	0,0450	2,9	5,0	324	567
2000x30	0,0600	3,0	5,3	432	756

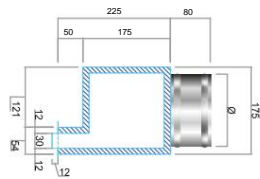
PRODUCT SECTION AND FIN DETAIL



dimensions

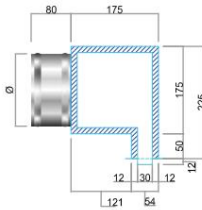
PSF height 30 mm - PLASTERBOARD INSTALLATION

Detail PSF height 30 mm with P connection



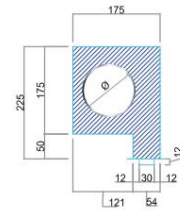
NB= For connection up to ø250 mm (ø200 and ø250 ovalised)

Detail PSF height 30 mm with S connection



NB= For connection up to ø250 mm (ø200 and ø250 ovalised)

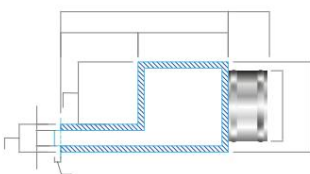
Detail PSF height 30 mm with L connection



NB= For connection up to ø150 mm

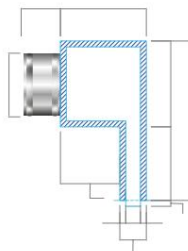
PSFM height 30 mm - WALL / BOARD INSTALLATION

Detail PSFM height 30 mm with P connection



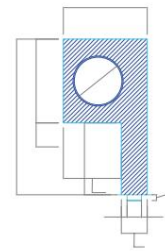
NB= For connection up to ø250 mm (ø200 and ø250 ovalised)

Detail PSFM height 30 mm with S connection



NB= For connection up to ø250 mm (ø200 and ø250 ovalised)

Detail PSFM height 30 mm with L connection



NB= For connection up to ø150 mm